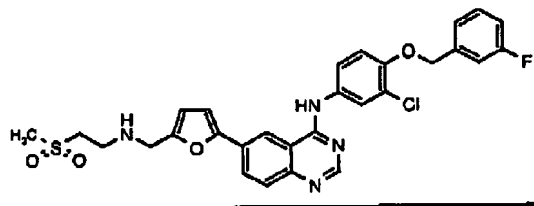
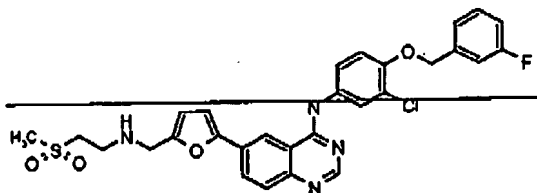


Atty. Docket No.: PG3418US2

**In the Claims:**

A complete listing of claims 1-36 with status identifier follows.

Claim 1 (Currently Amended): A compound of the formula:



and salts or solvates thereof.

Claim 2 (Original): A pharmaceutical formulation, comprising: the compound of claim 1 or a pharmaceutically acceptable salt or solvate thereof together with one or more pharmaceutically acceptable carriers, diluents, or excipients.

Claim 3 (Currently Amended): A method of treating a susceptible cancer in a human or animal subject mammal, comprising administering to said subject an effective amount of a compound as claimed in claim 1, wherein said cancer is breast cancer, gastric cancer or head and neck cancer.

B

Atty. Docket No.: PG3416US2

Claim 4 (Currently Amended): A method as claimed in claim 3, wherein the susceptible cancer is ~~a susceptible~~ breast cancer.

Claims 5-6 (Cancelled)

Claim <sup>5</sup> (Currently Amended): A method as claimed in claim 3, wherein the susceptible cancer is ~~a susceptible stomach~~ gastric cancer.

Claim 8 (Cancelled)

Claim <sup>8</sup> (Currently Amended): A method as claimed in claim 3, wherein the susceptible cancer is ~~a susceptible~~ head and neck cancer.

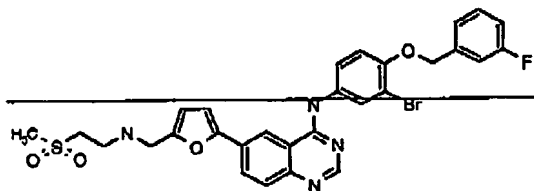
B1

~~Claim 10 (Currently Amended): A method as claimed in claim 3, wherein the susceptible cancer is ~~a susceptible cancer~~ characterized by expression or over-expression of EGFR.~~

Claim 11 (Currently Amended): A method as claimed in claim 3, wherein the susceptible cancer is ~~a susceptible cancer~~ characterized by expression or over-expression of ~~erbB-2~~.

Claim 12 (Currently Amended): A <sup>12</sup> method as claimed in claim 3, wherein the susceptible cancer is ~~a susceptible cancer~~ characterized by expression or over-expression of EGFR and erbB-2.

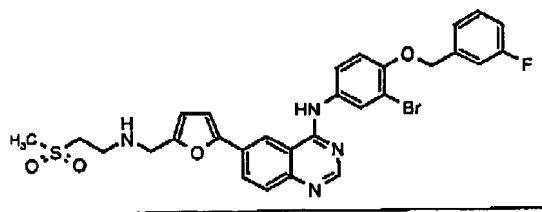
Claim <sup>13</sup> (Currently Amended): A compound of the formula:



T, 9000

B

Atty. Docket No.: PG3416US2



and salts or solvates thereof.

Claim <sup>8</sup>~~14~~ (Previously Presented): A pharmaceutical formulation, comprising: the compound of claim ~~13~~ or a pharmaceutically acceptable salt or solvate thereof together with one or more pharmaceutically acceptable carriers, diluents, or excipients.

B1 Claim <sup>9</sup>~~15~~ (Currently Amended): A method of treating a susceptible cancer in a human or animal subject mammal, comprising administering to said subject an effective amount of a compound as claimed in claim ~~13~~, wherein said cancer is breast cancer, gastric cancer or head and neck cancer.

Claim <sup>10</sup>~~16~~ (Currently Amended): A method as claimed in claim <sup>9</sup>~~15~~, wherein the susceptible cancer is a ~~susceptible~~ breast cancer.

Claims 17-18 (Cancelled)

Claim <sup>11</sup>~~19~~ (Currently Amended): A method as claimed in claim <sup>9</sup>~~15~~, wherein the susceptible cancer is a ~~susceptible stomach~~ gastric cancer.

Claim 20 (Cancelled)

Claim <sup>12</sup>~~21~~ (Currently Amended): A method as claimed in claim <sup>9</sup>~~15~~, wherein the susceptible cancer is a ~~susceptible~~ head and neck cancer.

*B*

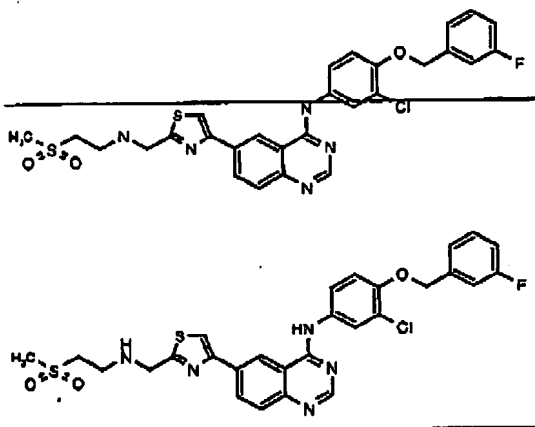
Atty. Docket No.: PG3416US2

~~Claim 22 (Currently Amended): A method as claimed in claim 1615, wherein the susceptible cancer is a susceptible cancer characterized by expression or over-expression of EGFR.~~

~~Claim 23 (Currently Amended): A method as claimed in claim 1615, wherein the susceptible cancer is a susceptible cancer characterized by expression or over-expression of erbB-2.~~

~~Claim 24 (Currently Amended): A method as claimed in claim 1615, wherein the susceptible cancer is a susceptible cancer characterized by expression or over-expression of EGFR and erbB-2.~~

<sup>13</sup>  
Claim 25 (Currently Amended): A compound of the formula:



and salts or solvates thereof.

<sup>14</sup>  
Claim 26 (Previously Presented): A pharmaceutical formulation, comprising: the compound of claim 25 or a pharmaceutically acceptable salt or solvate thereof together with one or more pharmaceutically acceptable carriers, diluents, or excipients.

*B*

Atty. Docket No.: PG3416US2

<sup>15</sup>  
 Claim ~~27~~ (Currently Amended): A method of treating a susceptible cancer in a human or animal subject mammal, comprising administering to said subject an effective amount of a compound as claimed in claim <sup>13</sup>~~25~~, wherein said cancer is breast cancer, gastric cancer or head and neck cancer.

<sup>16</sup>  
 Claim ~~28~~ (Currently Amended): A method as claimed in claim <sup>15</sup>~~27~~, wherein the susceptible cancer is ~~a-susceptible~~ breast cancer.

Claims 29-30 (Cancelled)

<sup>17</sup>  
 Claim ~~31~~ (Currently Amended): A method as claimed in claim <sup>15</sup>~~27~~, wherein the susceptible cancer is ~~a-susceptible stomach~~ gastric cancer.

B1

Claim 32 (Cancelled)

<sup>18</sup>  
 Claim ~~33~~ (Currently Amended): A method as claimed in claim <sup>15</sup>~~27~~, wherein the susceptible cancer is ~~a-susceptible~~ head and neck cancer.

C

~~Claim 34 (Currently Amended): A method as claimed in claim 27, wherein the susceptible cancer is a-susceptible cancer characterized by expression or over-expression of EGFR.~~

~~Claim 35 (Currently Amended): A method as claimed in claim 27, wherein the susceptible cancer is a-susceptible cancer characterized by expression or over-expression of erbB-2.~~

~~Claim 36 (Currently Amended): A method as claimed in claim 27, wherein the susceptible cancer is a-susceptible cancer characterized by expression or over-expression of EGFR and erbB-2.~~

B